

Formaldehyde Gas Sensor

(Low Ethanol Cross Sensitivity)

Product Data Sheet
Model #SS21F8_LE

2023. Ver 1.0

Applications

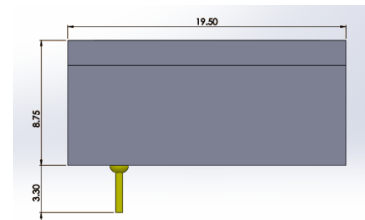
- Environmental monitoring of formaldehyde
- Ideal for portable instrument
- Indoor air monitoring applications
- Etc.



Specifications

Performance Characteristics	
Output Signal	60±20 nA / ppm
Typical Baseline Range (pure air)	≤±0.03 ppm
T90 Response Time	<30 seconds
Measurement Range	0-10 ppm
Maximum Overload	20 ppm
Linearity	Linear
Repeatability	≤±3%
Recommended Load Resistor	10 ohms
Resolution (Electronics Dependent)	≤0.01 ppm typical
Environmental	
Temperature Range Continuous	-10°C to +40°C
Pressure Range	800 to 1200 mbar
Operating Humidity Range	15% to 90% Rh
Life Time	
Long Term Output Drift	≤10% per annum
Recommended Storage Temp	0°C to 20°C
Expected Operating Life	≥24 months in air
Standard Warranty	24 months from date of dispatch
Intrinsic Safety Data	
Maximum at 20ppm	0.3mA
Maximum o/c Voltage	<1.3V
Maximum s/c Current	<1.0A

Dimension



Due to ongoing research and product improvement, specifications are subject to change without notice

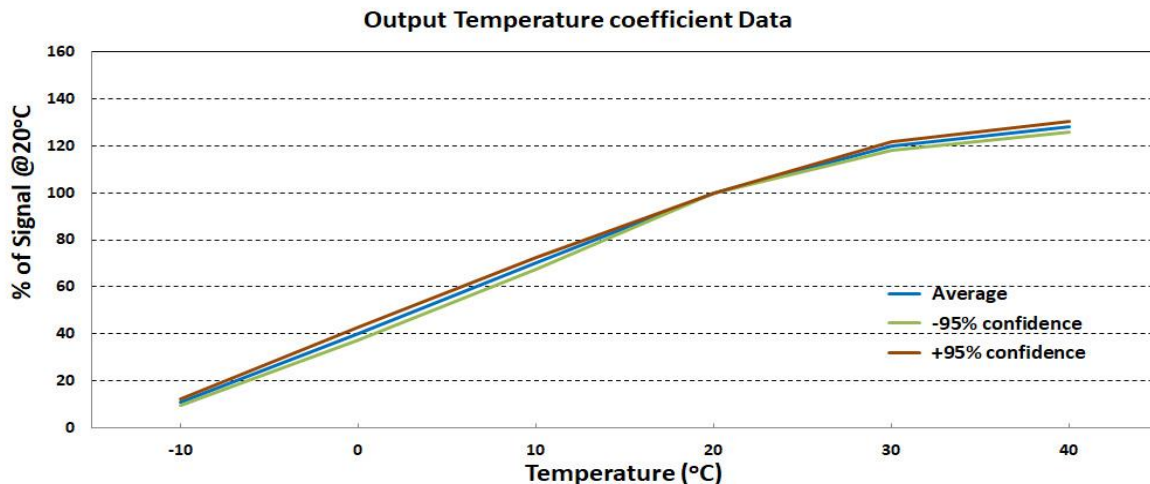
Formaldehyde Gas Sensor

(Low Ethanol Cross Sensitivity)

Product Data Sheet
Model #SS21F8_LE

2023. Ver 1.0

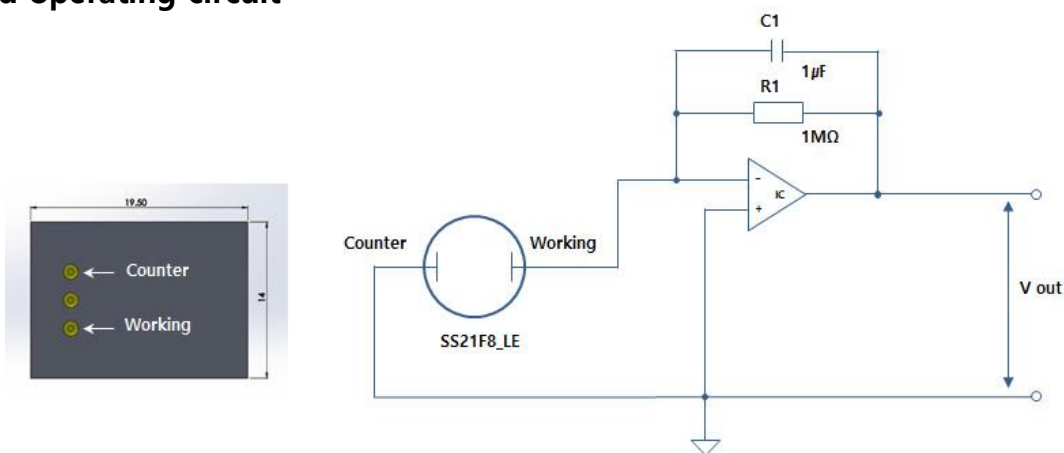
Temperature effects



Cross sensitivity

Substance	Cross Sensitivity (%)
Ammonia	0
Carbon monoxide	0
Ethanol	≤3
Acetaldehyde	0
Toluene	0
Acetic acid	0

Standard operating circuit



Due to ongoing research and product improvement, specifications are subject to change without notice